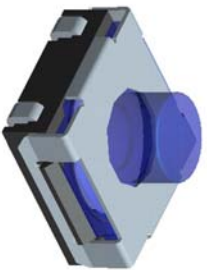
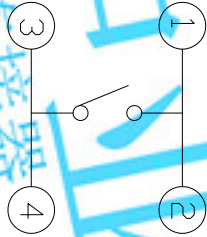
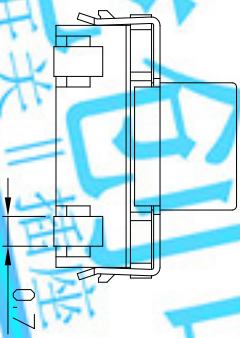
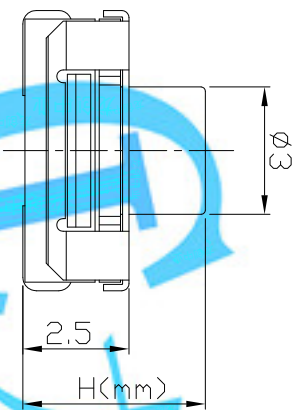


DIMENSIONS



AT-1158-

H	
-	3.4
A	4.0
B	4.3
C	5.0

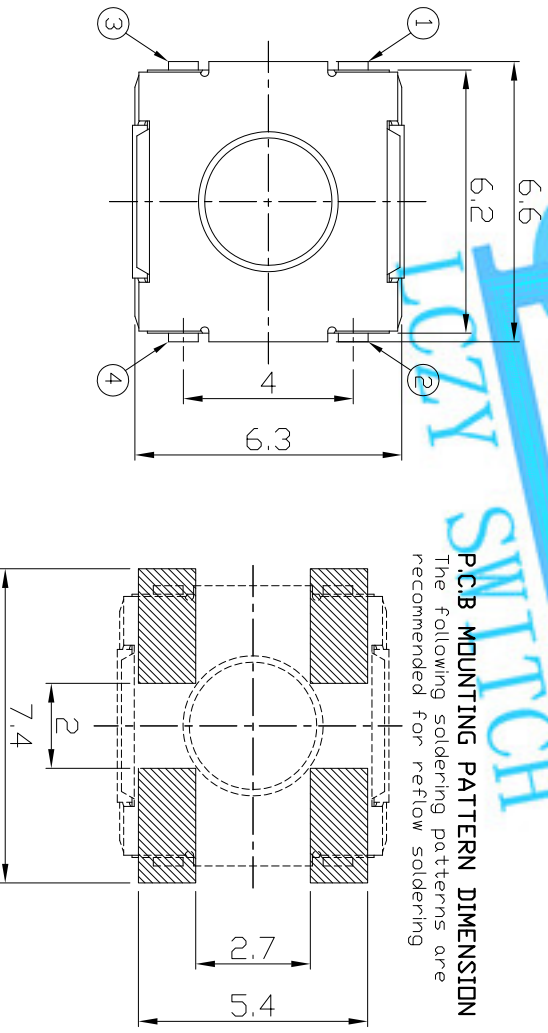
CIRCUIT DIAGRAM

PRODUCT IMAGE

MODEL CODE

P.C.B MOUNTING PATTERN DIMENSION

The following soldering patterns are recommended for reflow soldering



ELECTRO-MECHANICAL CHARACTERISTICS

Refer to additional specifications

Rating	DC 12V 50mA	
Contact Resistance	100mΩ Max.	
Travel	0.3 ± 0.2mm	
Operating Force	160±50gf	260±50gf
Operating Life(cycles)	100,000	

.X ±0.3		X. ±2°		UNITS	mm	
				MAT'L		
				SEE NOTE		
				FINISH		
				SEE NOTE		
				Q'TY		
				APPD:		

LONGCHUANG ZHONGYE (HK)CO.,LIMITED

TITLE: TACT SWITCH

PART NO.: AT-1158 SERIES

DR: Ricky 2017/04/06

DWG NO.: ASI-1158

CHKD: Ricky 2017/04/06

SCALE SHEET REV. 1:1 1/1 A

APPD:

CUSTOMER DRAWING